

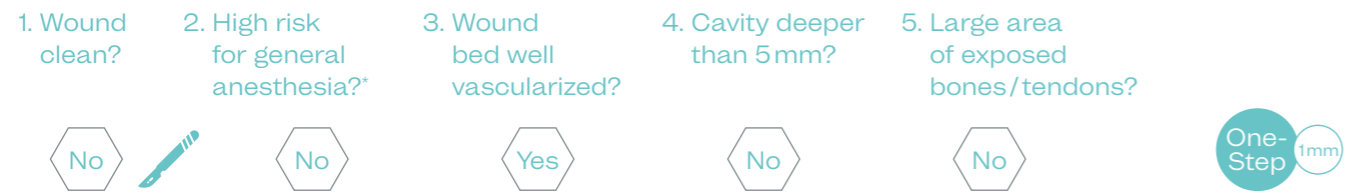
# Flame burn on chest and neck

**Type of Wound** Flame burn on chest and neck\*

**Etiology** Burn wound

**Patient** 42-year-old male

### Decision Tree

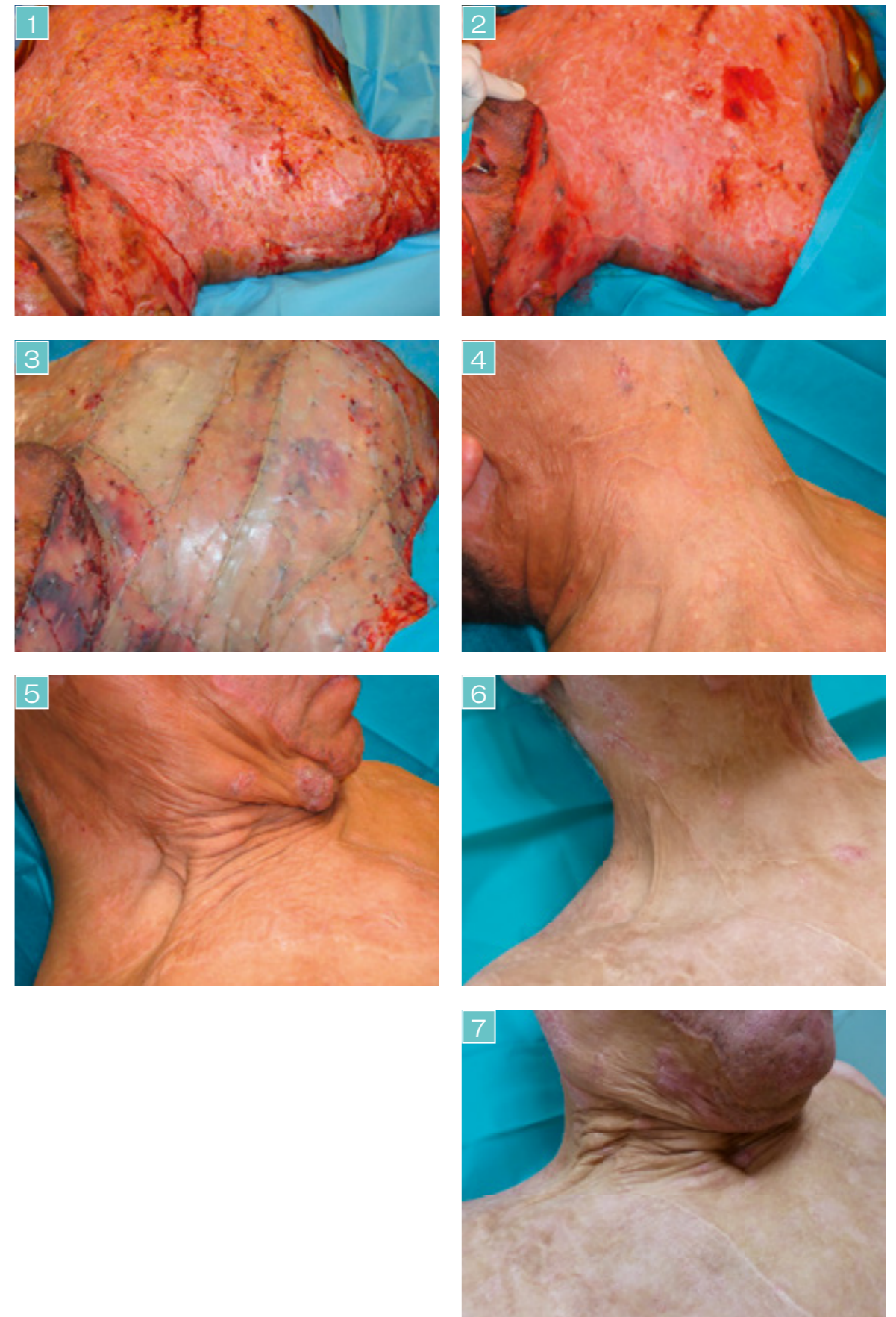


A 42-year old male presented with a flame burn on chest and neck (60% TBSA) (Fig.1). This is a challenging region due to high incidents of contractions, so high elasticity is very important.

The wound was carefully debrided to ensure a vital wound bed. MatriDerm® (1mm) was applied to the wound bed (Fig.2).

A split-thickness skin graft (STSG) was placed on top of MatriDerm® in a One-Step Procedure (Fig.3).

Two and five years post-operatively, the grafted area showed very good elasticity and skin colour. The good functional outcome was demonstrated by the unlimited extension of the neck (Fig.4-7). This case demonstrates that MatriDerm® can be used successfully in demanding region like the neck with excellent aesthetic and functional outcome.



\* Courtesy of E. Dantzer, MD, Toulon, France